

FarmOnline Explorer

Smartphone Apps

Technical Info



PRODUCT DESCRIPTION

FarmOnline Explorer is a mobile app for smartphones enabling the user to access SKOV house computers via the FarmOnline Explorer PC management program. By means of his smartphone and from anywhere with internet access, the user is ensured direct data access (real time) to any of his houses to see production and climate data as well as alarms.

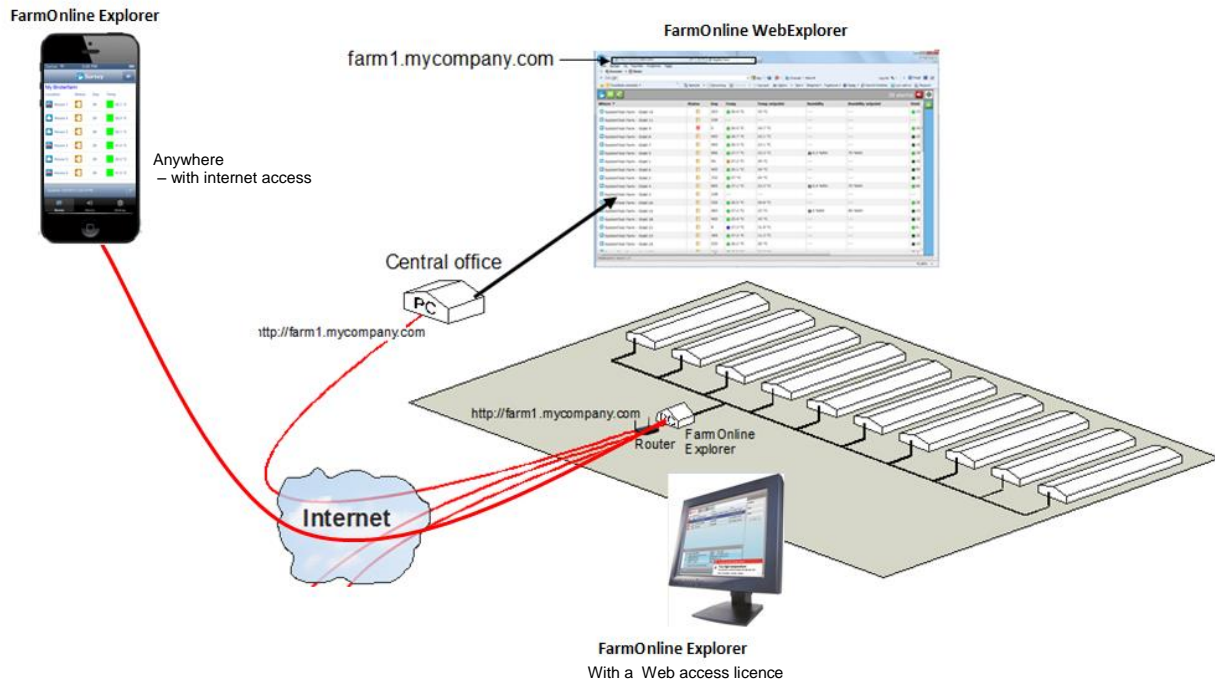


Figure 1: External data access to SKOV house computers

FarmOnline Explorer is available for Android, iPhone and Windows Phone 7.5 and 8. Each of the three types of smart phones has its own user interface, but with a common graphical expression and functionality.

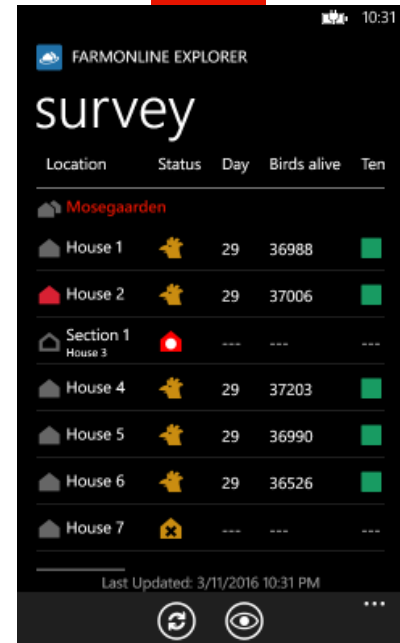
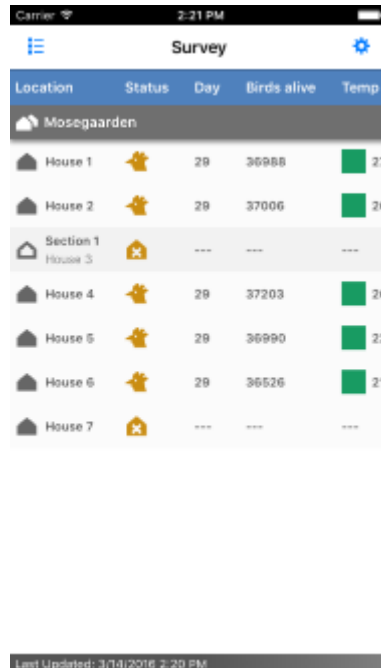
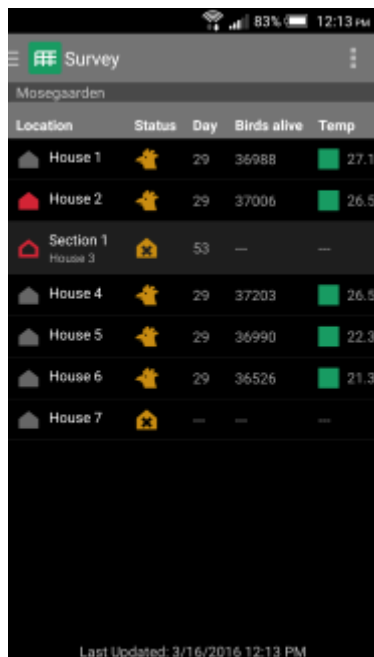
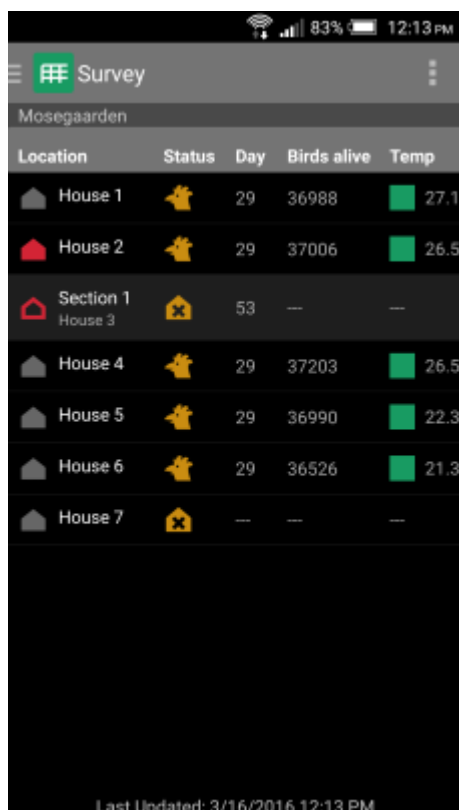


Figure 2: Survey screen with key values from several houses

1 Android

1.1 Survey Screen

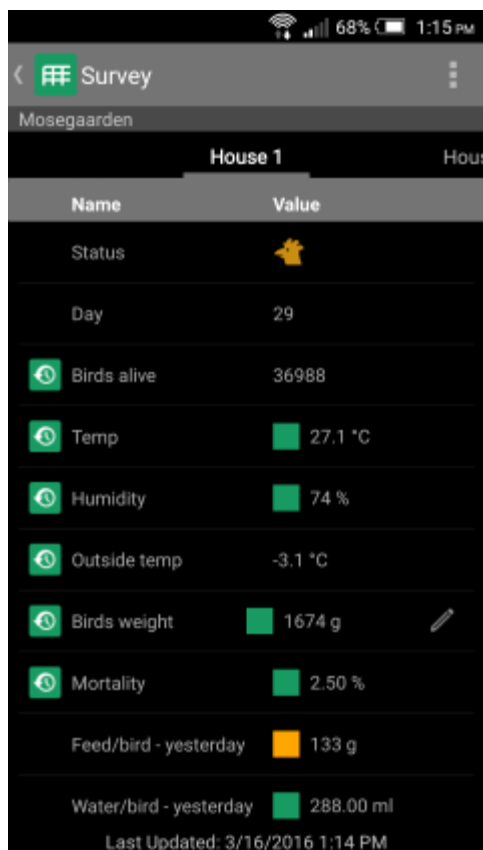


The survey screen shows data from several houses and farms. It provides a quick overview of the current status for alarms and selected key values.

Coloured fields next to the key values indicate whether the current value is within the desired range.

For multiple farms, the name of the farm will be located above the houses as a headline.

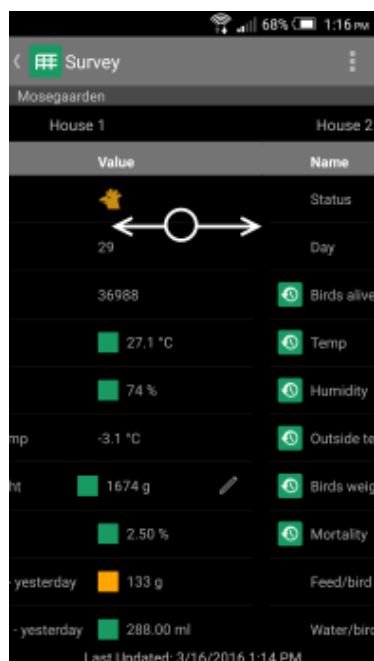
If the houses have sections or climate zones, the name of the house will be below the name of the section.



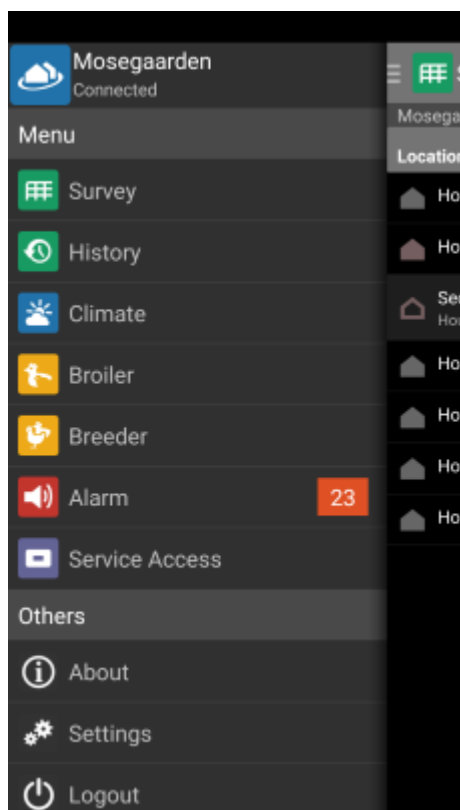
When the user presses a location in the survey screen, the app shows a more detailed survey of selected key values.

The selection of key values in the detailed survey can be different from the selection in the survey screen.

Other locations can be accessed in the same screen by sliding crosswise.



1.2 Main Menu



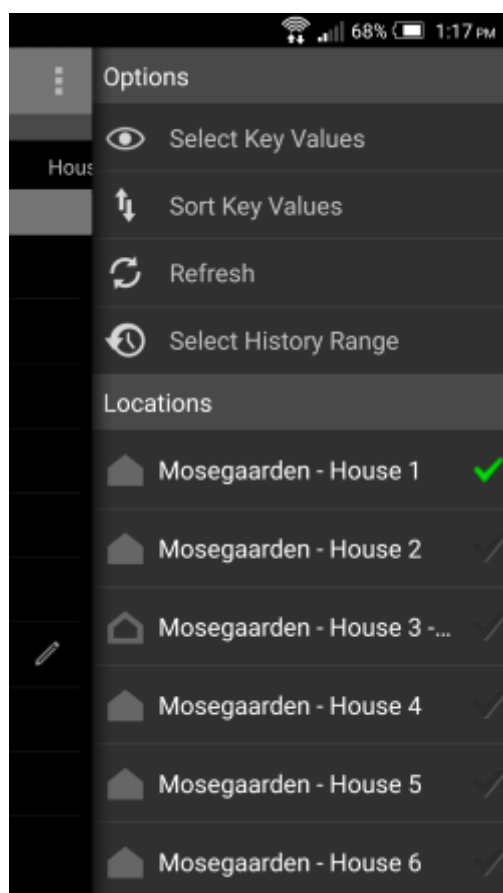
The main menu provides access to the various modules or features of the application. It is also possible to change the settings of the application or to logout from here.

For the Android version, the main menu is accessible by pressing on the icon located at the top left in any of the main screens of each module.

The three lines beside the icon show that the main menu can be accessed.



1.3 Screen Options



Certain screens are presented with a menu of additional options that can be selected for that screen.

If a screen has an options menu, there will be an icon at the top right.




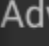




By clicking on this icon, the options menu will slide in from the right (similar to the main menu).

1.3.1 Available Options

Below is a list of options that are available throughout the application.

The functionality remains the same regardless of which screen the option is used.

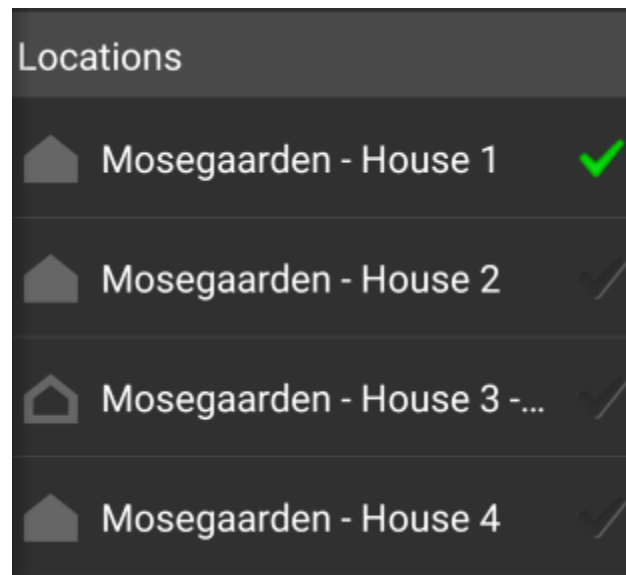
| | |
|--|---|
|  Refresh <p>Clicking on this will retrieve the latest data from the farms and updates the screen.</p> |  Select History Range <p>Clicking on this will bring up the History Range options. *See section 1.7.3</p> |
|  Select Key Values <p>Clicking on this will bring up the Key Value Selector screen. *see section 1.4</p> |  Advanced Key Values <p>Clicking on this will either show or hide the advanced key values. When selected, there will be a check mark on the right.</p> |
|  Sort Key Values <p>Clicking on this will bring up a screen to change the order the selected key values. *only used in Survey</p> |  Activate <p>Clicking on this will activate service access for the house computer. By doing this, you can control the house computer. *only used in Service Access</p> |

1.3.2 Quick access to different locations

For screens that provides data for a specific location (e.g. history or climate), a “Locations” option will be provided for quick access to a particular location.

By clicking on a particular location, the screen will go directly to the selected location.

The location that is currently in display will be marked in the list.

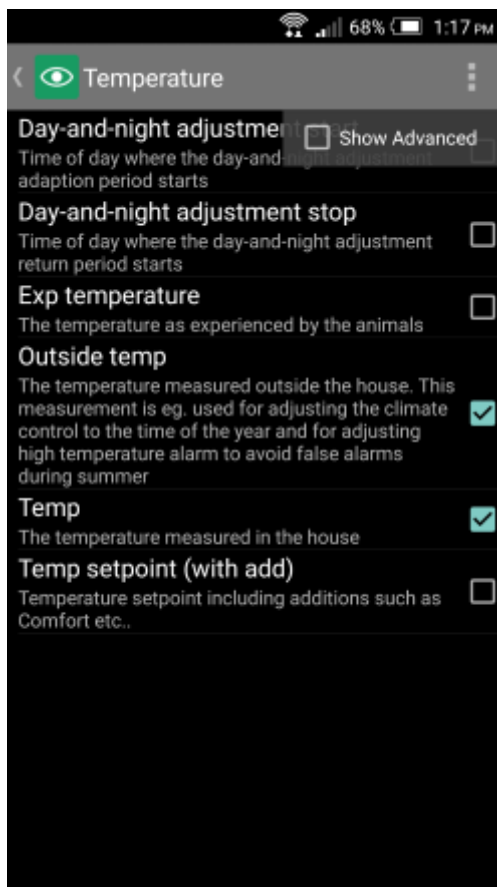


1.4 Key Values

From a list, the user can select which key values from the house computers are to be shown in the history screen, survey screen and details screen.

To access the list of key values, press on the Select Key Values options from the options menu

*see section 1.3 above about screen options



The key values selected for each screen belong only to that respective screen. This allows users to select only a few key values to be shown in survey & more key values in the detailed survey screen.

For the history screen, only key values that contain historical data will be selectable.

Clicking on the “Advanced” option will refresh the list to also include advanced key values.

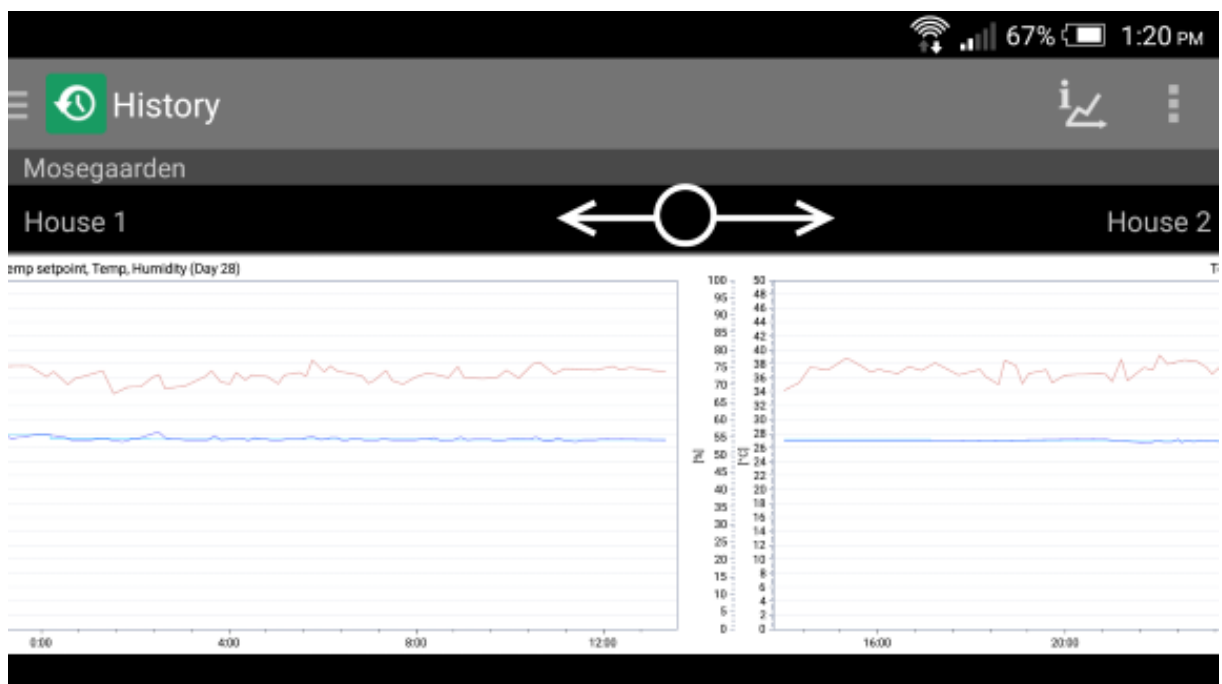
If an advanced key value is selected from the list, the “Advanced” option will be disabled. It is not possible to turn advanced key values off unless the advanced key values are removed from the list of selected key values.


1.5 History Screen

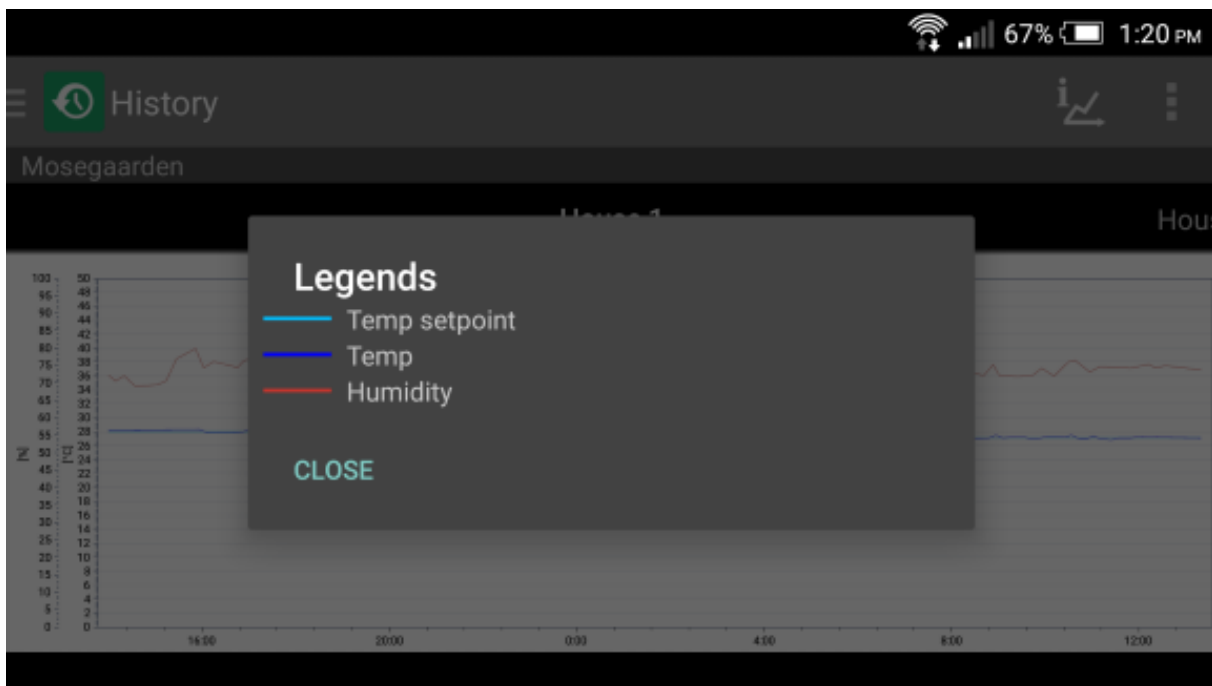
The history screen presents historical data of key values in the form of line graphs. More than one key value can be viewed within the same graph



Sliding horizontally will show the graph for the next location.



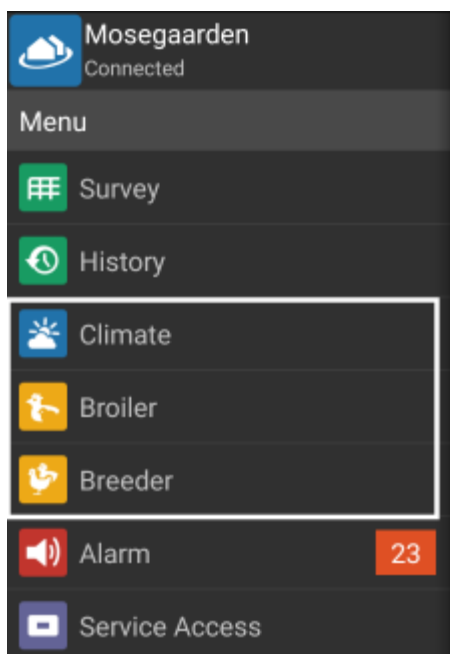
Pressing the  **Legend** icon will show the legend for the graph currently in display.



1.6 House Computers

House computer modules give quick access to the key values respective to the module

- Climate
- Broiler * requires FarmOnline Explorer 3.2 or above
- Breeder * requires FarmOnline Explorer 3.2 or above



These modules will appear in the main menu (see section 1.2) if the connected farm has these house computers configured in the desktop application.

By entering each module, you will be presented with a list of functions available in the house computer

Example below is for Climate



| House 1 | |
|-----------------------------------|---------|
| Name | Value |
| Actual abs. high temperature | --- |
| Advanced Comfort | --- |
| Avg exp temp - today | --- |
| Avg exp temp - yesterday | --- |
| Avg temp - today | 27.2 °C |
| Avg temp - yesterday | 28.0 °C |
| Chill effect | --- |
| Comfort setpoint | --- |
| Day-and-night adjustment | --- |
| Day-and-night adjustment activate | --- |

Last Updated: 3/16/2016 1:20 PM

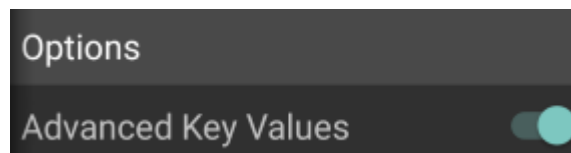
Clicking on an item in the list will bring up a list of its key values for each location, very similar to the detailed survey screen.

By default, the first location that has installed the house computer will be presented.

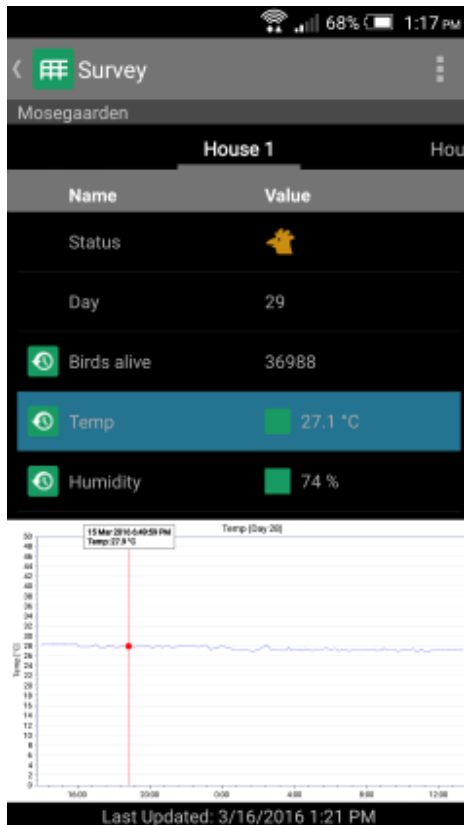
Other locations can also be accessed in the same screen by sliding crosswise.

The difference from survey screen is that all the key values listed in the climate screen will be specific only to the selected climate function.

In either screens, you have the option to show only the basic key values or all, including advanced key values via the right menu



1.7 Viewing Historical Data

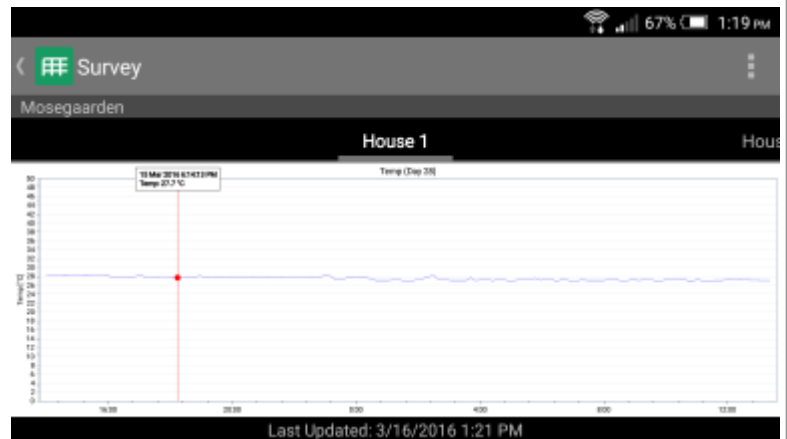


Historical data can also be viewed in both the Survey and the Climate's detailed screens too.

Key values that contains historical information will be represented with a History icon to the left of the name of the key value.

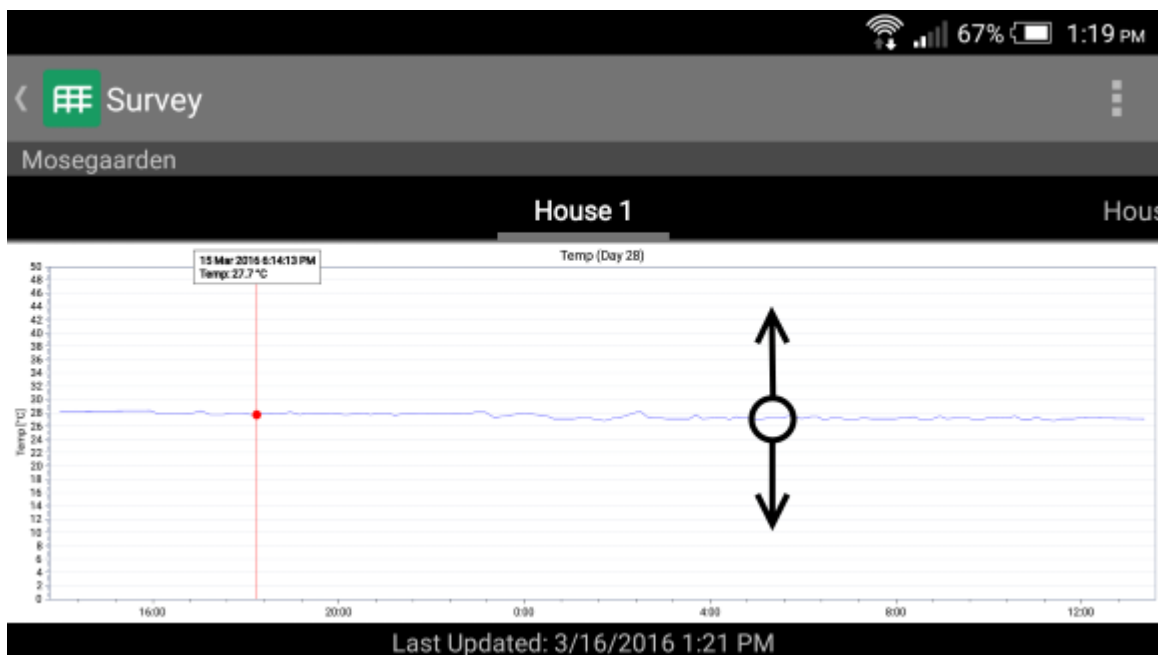
These key values can be pressed to display a graph that shows the historical data for that respective key value beneath the screen.

By turning the device to a landscape orientation, the graph will expand and appear bigger in the screen.



1.7.1 Selecting Key Values in Landscape View

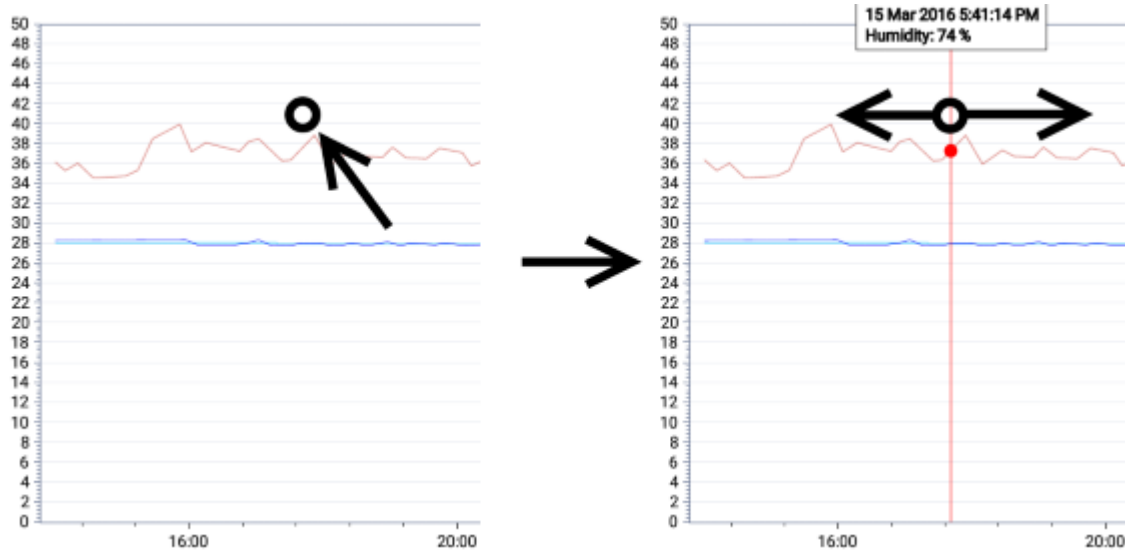
In both the *Survey* and *Climate* screens, sliding vertically while in landscape view will present the graph for the previous or next key value.



1.7.2 Reading the Graph

To read the data in the graph at a particular time, press and hold until the tracker is visible. Once the tracker is visible, slide horizontally to read the graph.

In history screen where there is more than one line: press on an area closest to the desired line.



1.7.3 Pinch Zoom

* requires FarmOnline Explorer 3.2 or above

To zoom into the graph to view more accurate values, touch the graph with two fingers and drag in opposite direction



In zoom mode, the screen will be locked to allow panning of the graph. You can touch the screen and drag in any direction to move and explore the graph.



To go back to normal, tap the magnifying glass icon at the top left corner of the graph. This will unlock the screen and the graph will be set back to 100% zoom

1.7.4 Changing History Range

Pressing the **Select History Range** option in the menu will bring up the **History Range** screen.
*see section 1.3 above on option menu.

In the **History Range** screen, users can choose to filter the history data by batches or by dates.

Selecting either batches or dates will have another subset of filters as below:

- Last 24 Hours
- Last Week
- Last 2 Weeks
- Entire Batch (only for batch range)
- Last Month (only for date range)
- Custom Selection (different selection in batch and date range)

Custom selection allows you to select your own criteria

For batch range, users can select their desired day number and the number of days back,
e.g. selecting day number: 30 and days back: 7 will show history data from day 23 to day 30.

For date range, users can select a custom date range
e.g. from 17/06/2013 12:00 AM to 25/06/2013 11:59 PM

History Range

Batch Date

SELECTION

Range: Current batch(Last 24 Hours)

PRESETS

1 Last 24 Hours

47 Last Week

14 Last Two Weeks

4 Entire Batch

CUSTOM SELECTION

Day Number

30

Days (back)

1

History Range

Batch Date

SELECTION

Range: 3/15/2016 2:00 PM - 3/16/2016 2:00 PM

PRESETS

1 Last 24 Hours

47 Last Week

14 Last Two Weeks

431 Last Month

Custom Range

Custom Range

Start 3/15/2016 2:00 PM

End 3/16/2016 2:00 PM

Min 3/16/2011 1:22 PM

Max 3/17/2016 1:22 PM

Entry Value

Start 3/15/2016 2:00 PM

End 3/16/2016 2:00 PM

Select the start and end date range

day number

30 day

Min 0 day

Max 30 day

Entry Value 30

Day number of current batch

(1 2 3 . P()

) 4 5 6 , W()

+ 7 8 9 - ←

_ * 0 # \$ ⇐

days (back)

1 days

Min 1 days

Max 999 days

Entry Value 1

Number of days back of current batch

(1 2 3 . P()

) 4 5 6 , W()

+ 7 8 9 - ←

_ * 0 # \$ ⇐

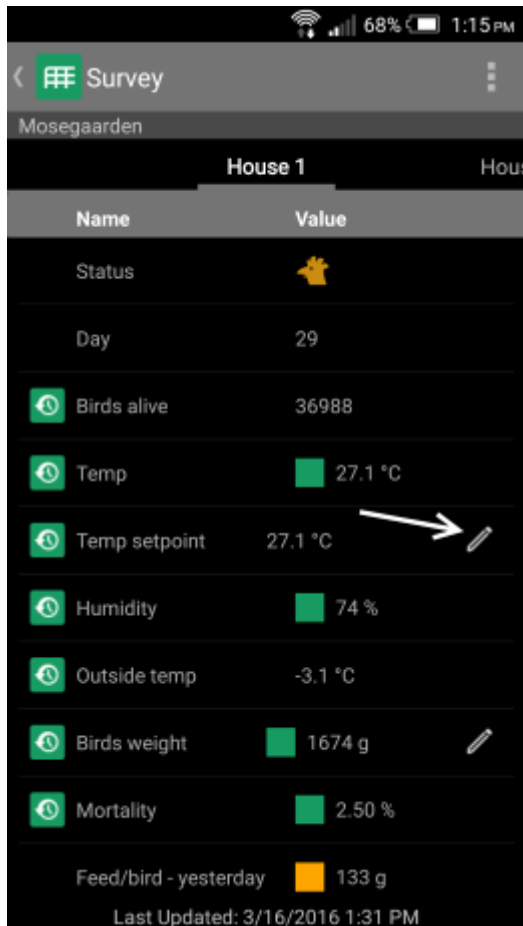
1.8 Changing Key Value Settings

* requires FarmOnline Explorer 3.2 or above

Setpoint key values can be configured from the detailed Survey or house computer (e.g. Climate) screens. (see sections 1.1 & 1.6)

Key values that are configurable will have a pencil at the right end of the row indicating that these key values are configurable.

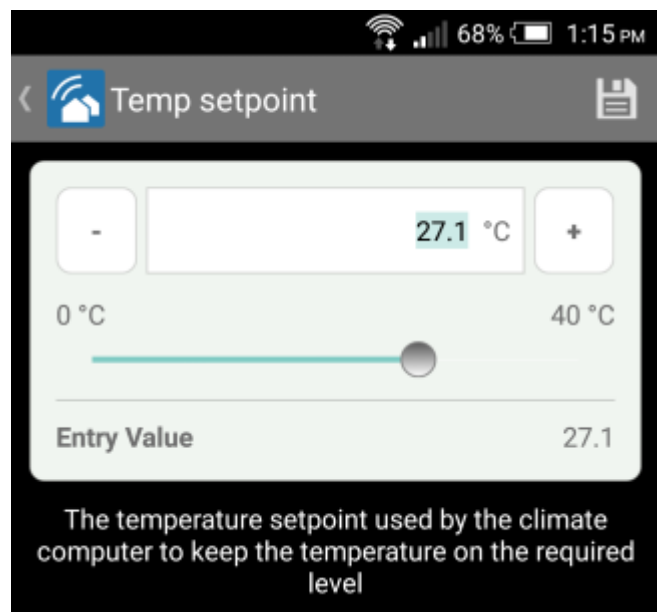
The mobile device must be configured to have write access in the desktop application. If the mobile device does not have the required permission, the pencil will be grey in colour indicating that this feature is disabled




Pressing on the pencil will bring up an editor that allows you to change the value of the key values respectively.

Depending on the value type of the key value, a different setpoint screen may appear.

Below example is for a temperature setpoint.



Upon pressing on , this change will then be sent to the house computer to be updated and the survey data refreshed

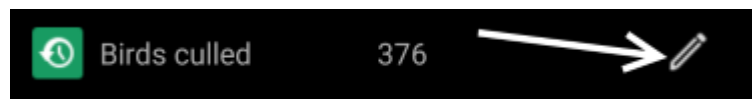
Pressing on the back button will ignore any changes made and return back to the key value list.

1.9 Key Value Registrations

* requires FarmOnline Explorer 3.2 or above

Similar to the setpoint key values (see section 1.8), key value registrations can be accessed via the detailed Survey or house computer (e.g. Broiler/Breeder) screens (see section 1.1 & 1.6)

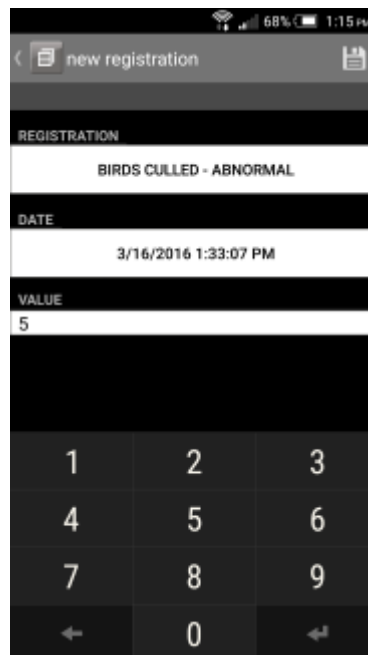
Pressing on the pencil on these key values will, instead, bring up a Registration window



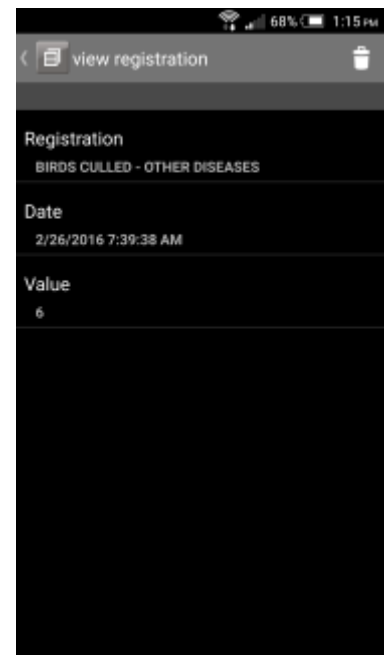
The Registration window lists down all the past registrations made for the current batch.



Press on the + sign at the top right to add a new registration.



Select an existing registration to view and also to delete it.



Pressing on the icon at the bottom left allows you to view more information related to this registration.



1.10 Alarm Screen

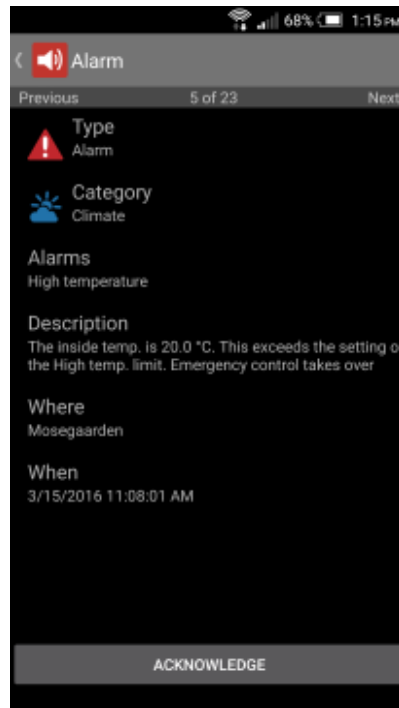


In the survey screen, the user can see which locations have active alarms with a blinking alarm icon.

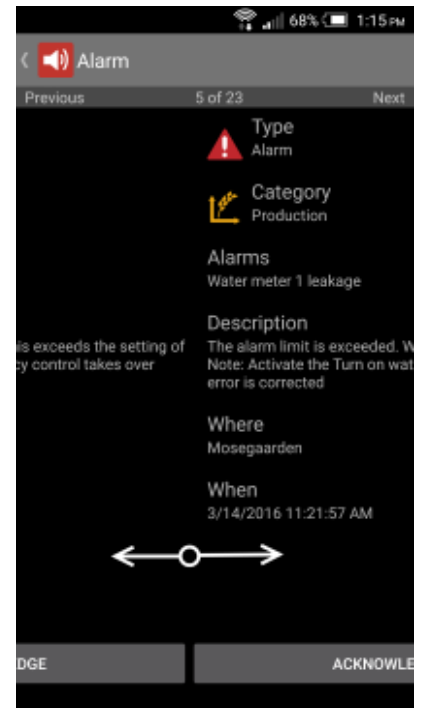
In order to view a list of active alarms, open the alarm screen via the main menu (*see section 1.2 on main menu).



Press an alarm in the alarm list for more details of the alarm in question and a brief description of the alarm situation.



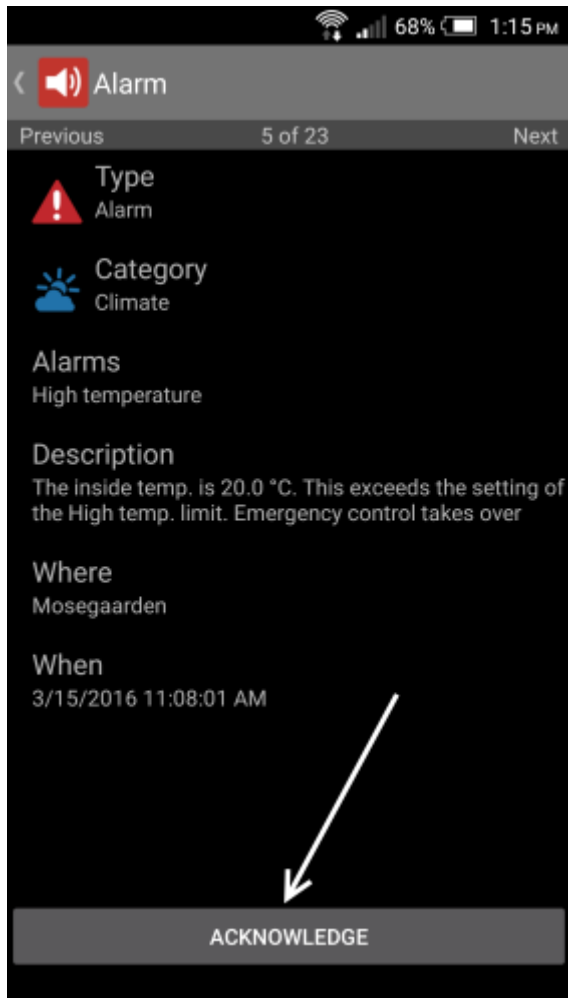
Sliding horizontally will display the details of the previous or next alarm.



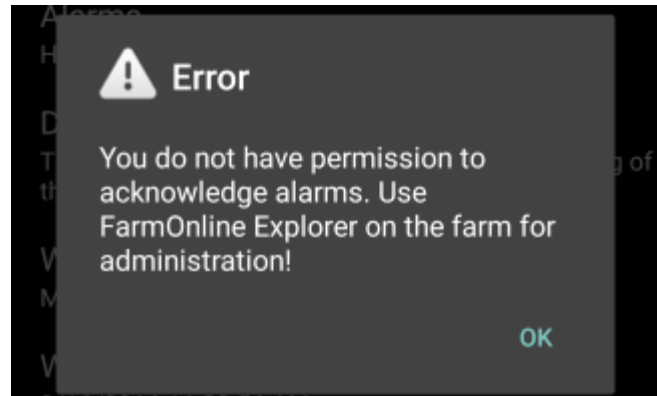
1.10.1 Acknowledging Alarms

* requires FarmOnline Explorer 3.2 or above.

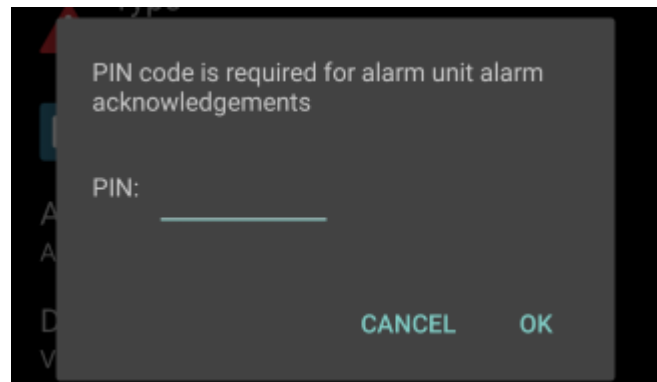
Alarms can be acknowledged from the mobile by pressing on the “Acknowledge” button at the bottom of the respective alarm screen.



If your mobile device was not granted write access (from the desktop application) a warning message will appear if the button is clicked, telling you that you need to enable “Write access” from the desktop application first.



If the alarm you're trying to acknowledge requires a PIN code, a prompt will be shown to request for a PIN prior to acknowledging the alarm.



1.11 Service Access

* requires FarmOnline Explorer 3.2 or above.

Service Access allows users to control the house computers directly via their mobile phone.



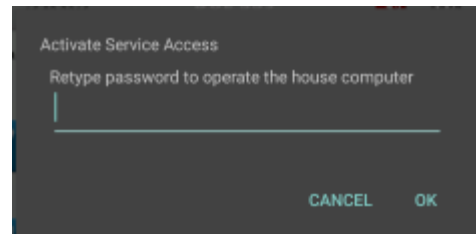
The main screen in Service Access lists all available house computers that has service access configured*

By selecting a house computer from the list, the screen of the house computer will then be displayed.



In order to make changes to the house computer, you will need to activate it. Activation requires you to retype the password used for login.

*additional license is required to enable Service Access on the desktop application.



Once activated, you will be able to control the house computer directly from the app.

