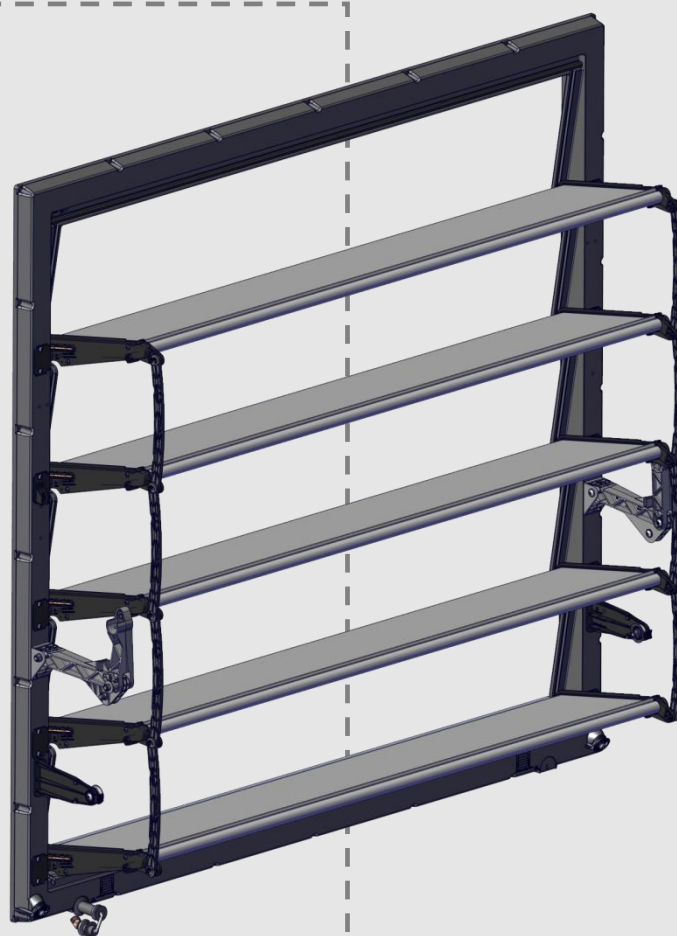


DA 17K Tunnel Inlet

Technical Info



1 Product description

The DA 17K tunnel inlet is used as an air inlet in houses with Tunnel-ventilation or Combi-Tunnel-ventilation.

The DA 17K tunnel inlet can be installed directly into interior walls or sandwich panels.

The DA 17K is available both with high-insulated inlet flaps made from PVC (polyvinylchlorid) fill up with insulation and with semi-insulated inlet flaps made from PVC (polyvinylchloride).

The inlet is delivered with the inlet flaps installed. The operation set is installed on-site.

Encroachment into the house is 370 mm.

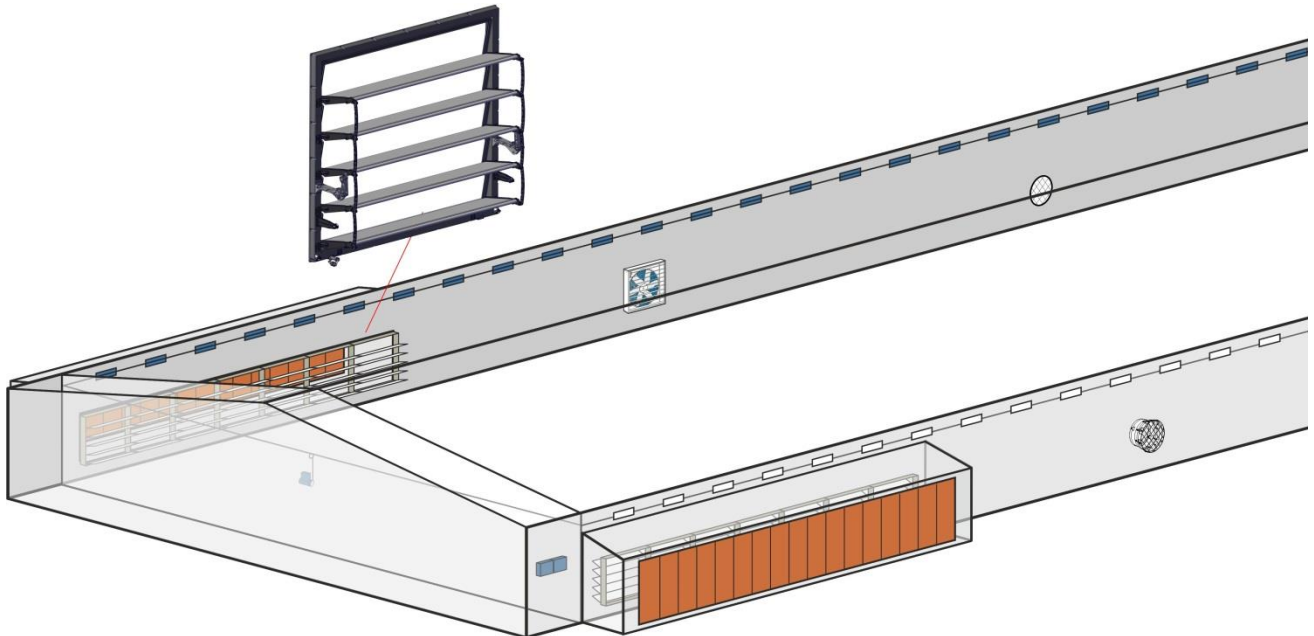


Figure 1: Drawing of DA 17K tunnel inlet, single row

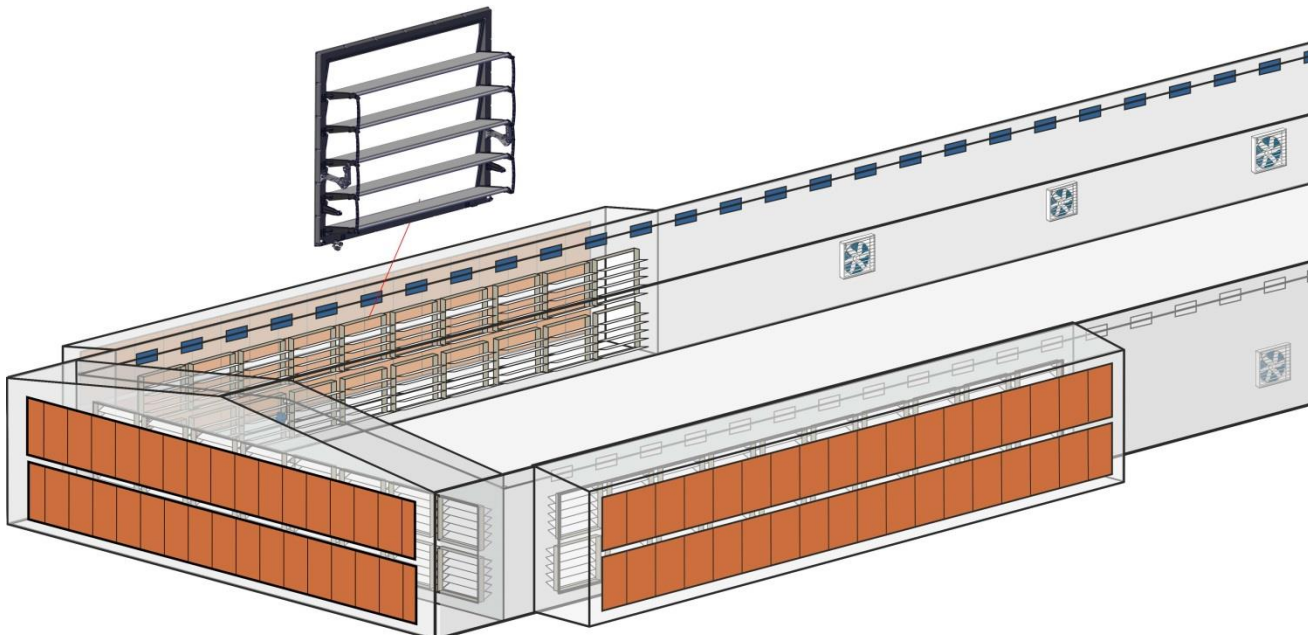


Figure 2: Drawing of DA 17K Tunnel inlet, double row

2 Product survey

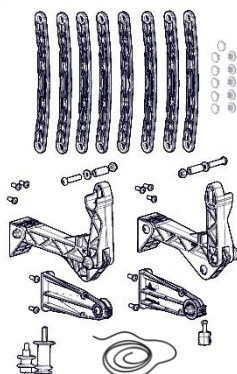
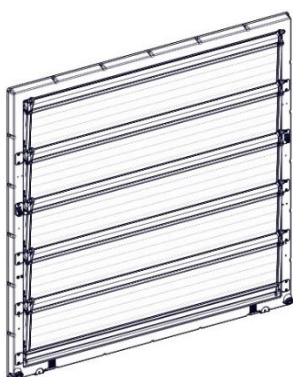


Inside position
(the air moves from left to right)



Outside position
(the air moves from right to left)

DA 17K tunnel inlet

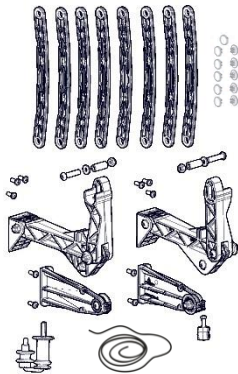
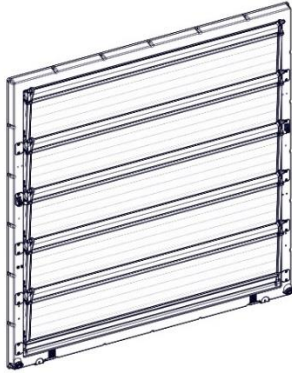


433700 DA 17K tunnel inlet, highly insulated

DA 17K highly insulated is used for installation in walls, inside the house and where insulation is necessary.

The mounting parts are used for assembling the DA 17K.

DA 17K tunnel inlet

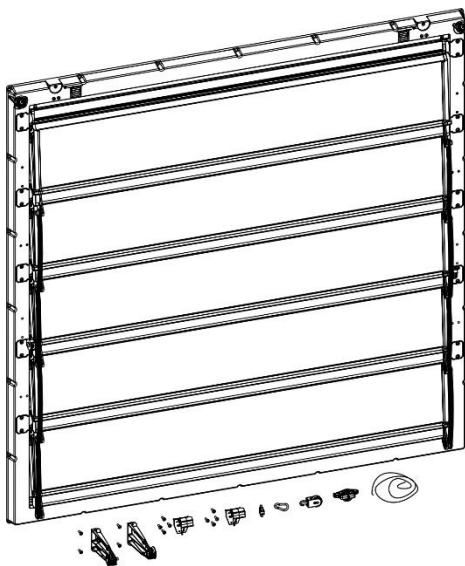


433701 DA 17K tunnel inlet, semi-insulated

DA 17K semi-insulated is used for installation in walls, inside the house where insulation is not necessary.

The semi insulated tunnel inlet should only be used when dimensioned for an outside temperature of above 5°C.

The mounting parts are used for assembling the DA 17K.



433716 DA 17K tunnel inlet, highly ins. outside

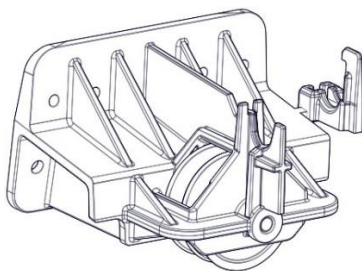
DA 17K tunnel inlet, outside is highly insulated and used for external assembly on the wall.

When you mount the tunnel inlet on the outside, the inlet does not take up space inside the livestock house. It also prevents the animals from getting a grip of the strings or connectors.

The mounting parts are used for assembly of the DA 17K, outside.

DA 17K outside must always be protected against wind and weathering – e.g. by placing the tunnel inlets in combination with either cooling pads, light trap flex or the like.

DA 17K tunnel inlet accessories

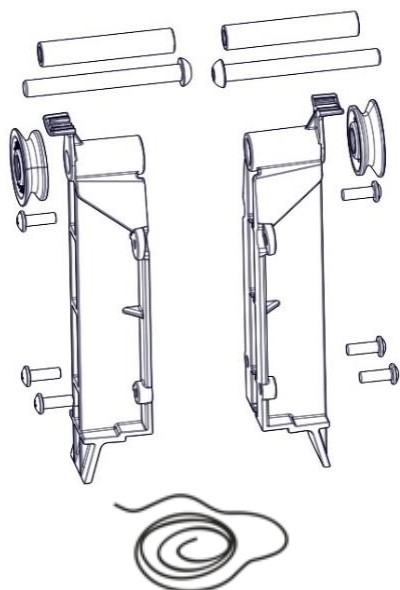


433710 Wall inlet bracket for pull rod

The bracket is used when a pulling system above the inlet is desired, instead of, as normally, below the inlet.

2 per inlet.

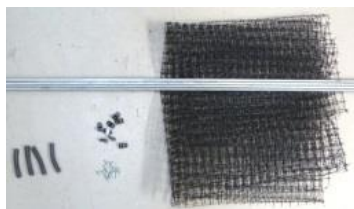
DA 17K tunnel inlet accessories



433711 Tunnel inlet, support bracket

The bracket is used when a pulling system above the inlet is desired, instead of, as normally, below the inlet.

1 per inlet..



433703 DA 17K bird net

Net protects against birds.

Mask size = 20 x 16 mm.

Dimensions = 1,390 x 1,390 mm.

1 per inlet.

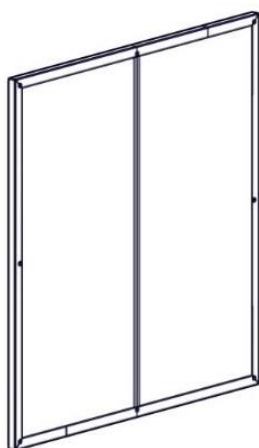


433702 Tunnel inlet screw kit

Used for mounting of DA 17K tunnel inlet.

Includes 24 4.8 x 70mm tapping screws.

1 set per inlet.



433704 DA 17K insulation cover

The cover is used to minimise draughts and heat-loss during cold periods, when DA 17K is not in use.

The cover should always be used if the dimensioned outside temperature is less than -10°C.

Supplied with mounting set and mounting guide.

1 per inlet.

3 Technical data

DA 17K tunnel inlet		
Performance	Inside position	Outside position
Air output at 10 Pa [m³/h]	18,200	17,300
Mechanical		
Material high-insulated / semi-insulated	PVC (polyvinylchloride)	
Spring	Stainless steel	
Color - inlet frame	RAL 7024 (grey)	
Color - inlet flaps high-insulated / semi-insulated	RAL 9010 (white) / RAL 7035 (pale grey)	
Net size [mm]	1,390 x 1,390 with 17 x 17 masks	
Tensile force [kg]		
Tunnel inlet, inside	22	
Tunnel inlet, outside	24	
Tensile length [mm]	600	
Environment		
Ambient temperature, operating		
High-insulated	- 40 to + 50°C (-40 to + 122°F)	
Semi-insulated	+ 5 til + 50 °C (41 til + 122 °F)	
Ambient temperature, storage	-40 to +65°C (-40 to +149°F) – and protected against direct sunlight.	
Relative humidity, operating	0-95 % RH	
Shipping		
Dimensions H x W x D [mm] per layer	1600 x 1600 x 125	
Weight [kg] per piece	25	
Number of inlets per pallet [pcs.]	17	

3.1 Dimension drawing DA 17K tunnel inlet

Dimensions expressed in mm.

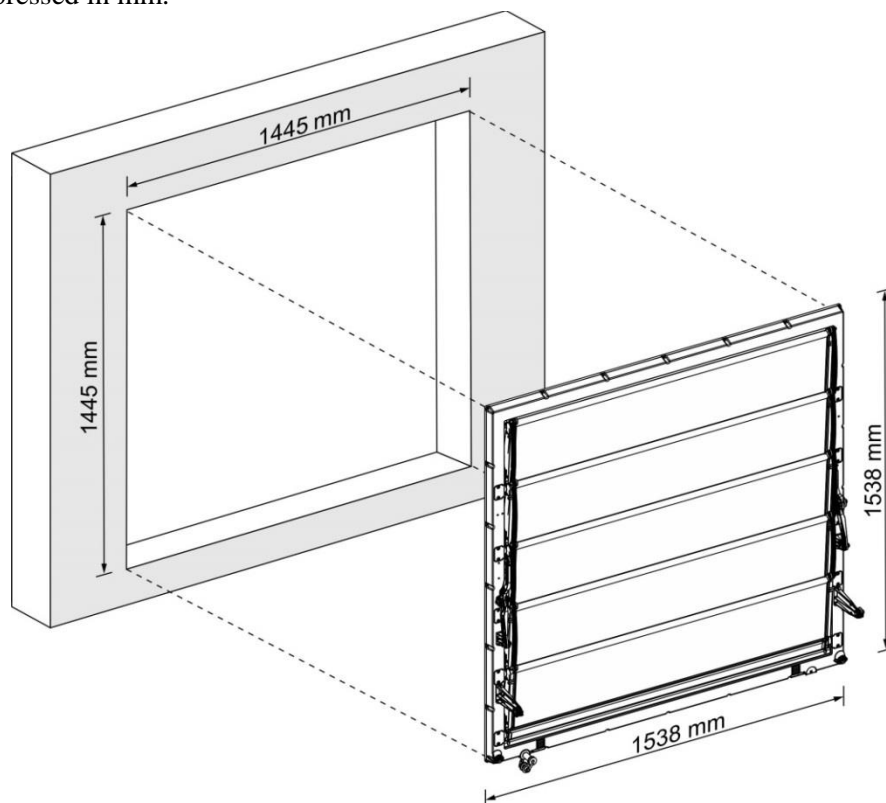


Figure 3: Dimensions for the DA 17K hole

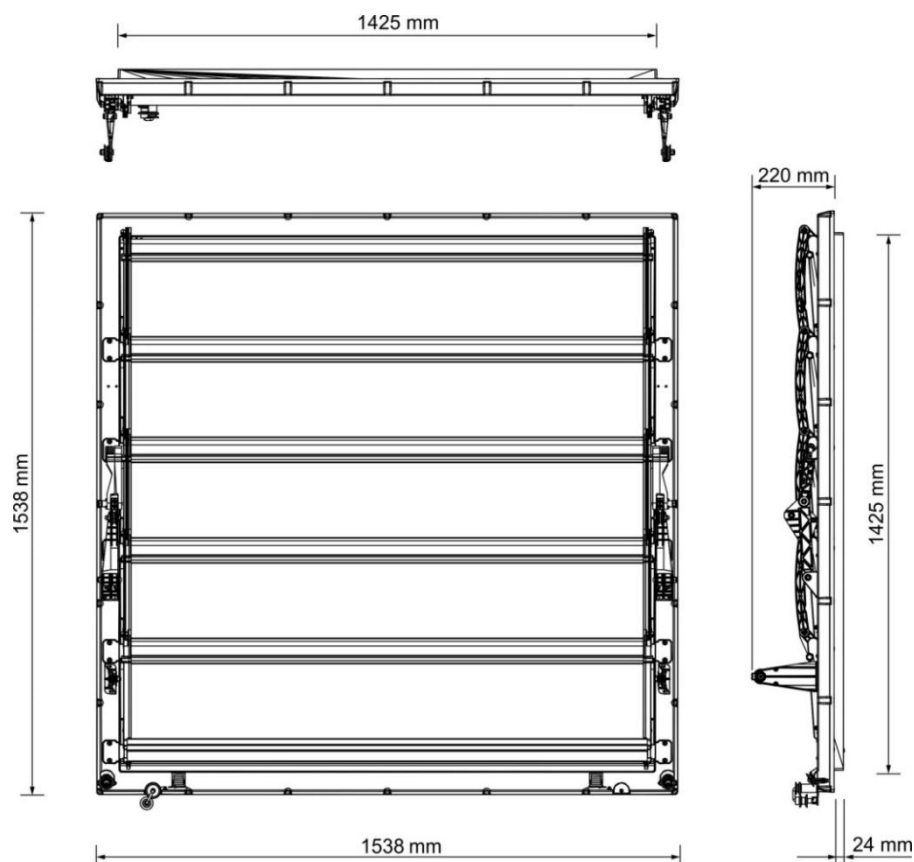


Figure 4: Dimensions for DA 17K

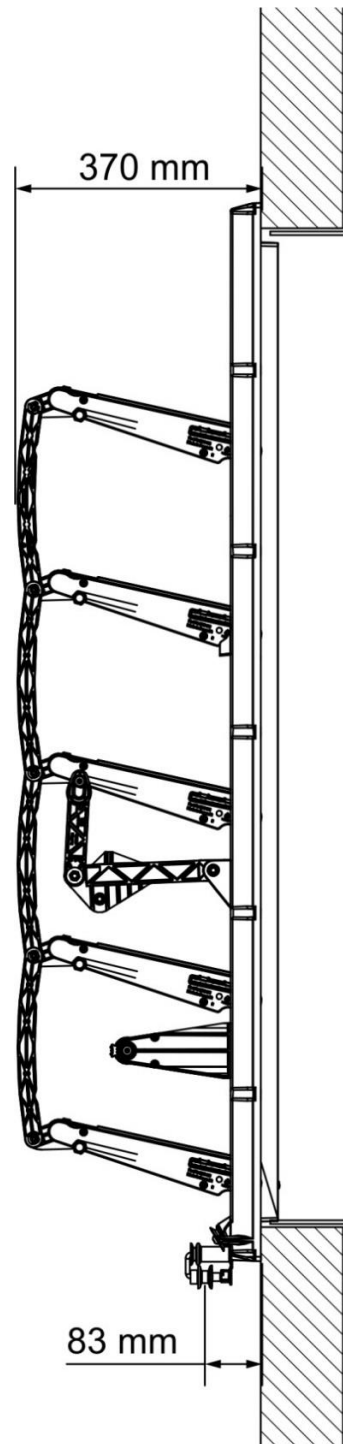


Figure 5: Dimensions for DA 17K from the side with wall.

